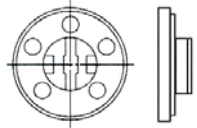


Product APPLICATION Guide

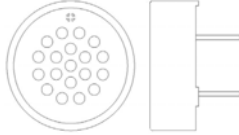


Bare Miniature Speaker

Bare Miniature Mylar Speaker

Part Number	Impedance (Ohms)	Rated Power (Watts)	Max Power (Watts)	Frequency Range (kHz)	Sound Level (1W 1M)	Frame Material	Size Dia x Hgt (mm)
Mylar Speaker- Metal Frame							
PSR-13N08A-JQ	8	0.25	0.30	1.8 to 7.0	75	Metal	13 x 5.0
PSR-18N08A-JQ	8	0.25	0.30	1.8 to 4.0	84	Metal	18 x 3.0
PSR-20N08A-JQ	8	0.25	0.30	0.9 to 5.0	80	Metal	20 x 3.0
PSR-28N08A-JQ	8	0.25	0.50	0.7 to 8.0	89	Metal	28 x 4.3
PSR-36N08A-JQ	8	0.25	0.50	0.55 to 7.0	89	Metal	36 x 4.8
PSR-40N08A-JQ	8	0.25	0.50	0.5 to 6.0	87	Metal	40 x 4.8
PSR-40N08A05-JQ	8	0.25	0.50	0.5 to 5.0	89	Metal	40 x 5.0
PSR-45N08A-JQ	8	0.25	0.30	0.4 to 6.0	88	Metal	45 x 4.8
PSR-57N08A01-JQ	8	0.25	1.0	0.6 to 4.0	92	Metal	57 x 7.0
Mylar Speaker- Plastic Frame							
◆PSR-11N08S-JQ	8	0.25	0.30	1.6 to 9.0	75	Plastic	11 x 4.5
PSR-20F08S-JQ	8	0.25	0.30	1.3 to 6.0	80	Plastic	20 x 5.0
◆PSR-23N08S-JQ	8	0.25	0.30	1.0 to 5.0	83	Plastic	23 x 3.7
PSR-23F08S-JQ	8	0.25	0.30	0.9 to 6.5	81	Plastic	23 x 5.0
◆PSR-27N08S01-JQ	8	0.25	0.50	0.75 to 7.0	84	Plastic	27 x 5.0
PSR-29F08S02-JQ	8	0.25	0.50	0.8 to 4.5	84	Plastic	29 x 9.0
PSR-40F08S02-JQ	8	0.25	0.50	0.8 to 5.0	86	Plastic	40 x 7.5
PSR-50F08S-JQ	8	0.25	0.50	0.5 to 5.0	91	Plastic	50 x 10.5
PSR-57F08S02-JQ	8	0.25	0.50	0.35 to 5.0	90	Plastic	57 x 12.5

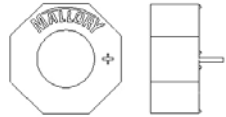
◆Magnet inside of Plastic Frame



PC Pin Mount Speaker

Mylar Speaker- PC Pin Mount

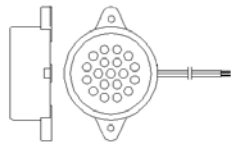
Part Number	Impedance (Ohms)	Rated Power (Watts)	Max Power (Watts)	Frequency Range (kHz)	Sound Level @ 10cm	Size Dia x Hgt (mm)	PC Pin Spacing (mm c/c)
PB-2712PQ	8	0.15	0.2	1.25 ± 0.5	85	30 x 13.5	15
PB-2015PQ	8	0.1	0.15	1.50 ± 0.5	75	23 x 8.8	10



PC Pin Mount Speaker

Speaker- PC Pin Mount- IEC60601-1-8

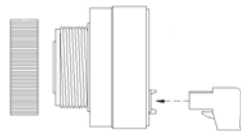
Part Number	Impedance (Ohms)	Rated Power (Watts)	Max Power (Watts)	Frequency Range (Hz)	Sound Level @ 10cm	Size Dia x Hgt (mm)	PC Pin Spacing (mm c/c)
MSS300R	8	0.25	0.5	325 ± 24	85-90	23 x 13.5	15



Flange Mount Speaker

Mylar Speaker- Flange Mount

Part Number	Impedance (Ohms)	Rated Power (Watts)	Max Power (Watts)	Frequency Range (kHz)	Sound Level @ 10cm	Size Dia x Hgt (mm)	Flange Spacing (mm c/c)
PB-2712WQ	8	0.15	0.2	1.25 ± 0.5	85	30 x 13.5	32
PB-2015WQ	8	0.1	0.15	1.50 ± 0.5	75	23 x 8.8	28.5



Panel Mount Speaker

Speaker- Panel Mount- IEC60601-1-8

Part Number	Impedance (Ohms)	Rated Power (Watts)	Max Power (Watts)	Freq. Range (Hz)	Sound Level @ 10cm	Size Dia x Hgt (in)	Termination
SCS300MDB	8	0.25	0.5	325 ± 24	85-90	1.69 x 1.41	Block

Call 317-612-1000 or Visit www.mallory-sonalert.com for More Details