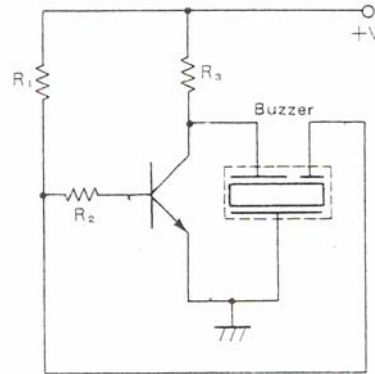


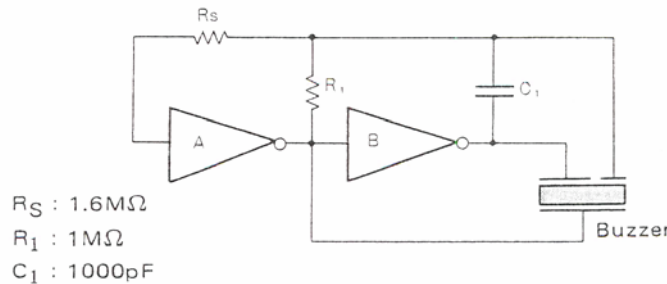
# Technical APPLICATION Guide

## Self-Drive Transducer Circuits

Self Drive Transducers have three terminals. The third terminal supplies a feed-back voltage that is 180° out of phase with the drive signal. Below are two circuits that can be used with these types of transducers.



- $R_1 : 200K\Omega$
- $R_2 : 10K\Omega$
- $R_3 : 510\Omega$



- $R_S : 1.6M\Omega$
- $R_1 : 1M\Omega$
- $C_1 : 1000pF$

It should be noted that these circuits are only initial suggestions. Values of the resistors may need to be adjusted depending on the particular transducer model used. Square-wave type signals result in more sound level than sine-wave type signals.