



Market APPLICATION Guide

Industrial Control Panels (Panel Boxes)

Over-View:

Mallory Sonalert panel mount alarms have been used in panel box applications since the product line was introduced 40 years ago. Hundreds of models are available with voltages up to 250 Vac, various sound types, levels, & termination options.

Applications:

22mm Hole Size , CSA (cUL), General Panel Box, High Voltage, Low Power, PLC Compatible, UL Recognized, Waterproof (UL-50; UL-508A; NEMA 3R, 4X, & 12; IP66; CSA), Hazardous Location (Class I Div II Groups A, B, C, & D)

Alarms to Use for These Applications:

<u>General:</u>	Any SC, SCE, SCL, SNP, or LSC series model.
<u>UL & cUL:</u>	SC105, SC307N, SC616N, SC628, SC110, SC250, SC628NP, SC110CP, etc. (57 models available- See cUL Yellow Card).
<u>Terminal Block:</u>	SCE Series (SCE016SD3CTB, SCE028SA3CTB, etc.)
<u>Low Power:</u>	SCL Series (SCL028LD3CTB, SCL028XA3CTB, etc.)
<u>Waterproof:</u>	Use accessory rubber gasket P/N ACC03 with any SC or SCE series panel mount model. UL and cUL yellow cards available.
<u>Snap-in:</u>	SNP2, SNP428, SNP428F
<u>LED & Alarm:</u>	LSC616, LSC616N, LSC110N, LSC250N, LSC628AN
<u>22mm Hole Size:</u>	PK-20A35EWQ, PL-20A35EWQ, PF-20A35EWQ
<u>Tamper-Proof:</u>	PK-27N35ERQ, PK-27A35ERQ, PK-27A35EPQ, PF-27N35ERQ
<u>Hazardous Location</u> <u>Class I Div II:</u>	SCH Series (SCH628R, SCH110R, SCH250R, etc.)

Continued →

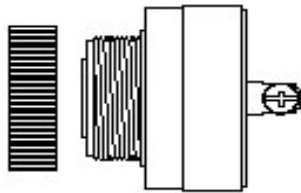
Industrial Control Panels (Con't)

Accessories to Consider:

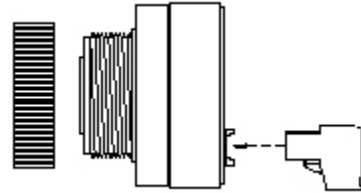
ACC01 (Metal "L" Bracket), ACC03 (NEMA Gasket), SCVC (volume control)

Other Capabilities:

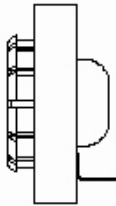
Custom Voltage Ranges, Custom Temperature Ranges, Environmental Testing, Custom Cable Assemblies, Custom Terminations



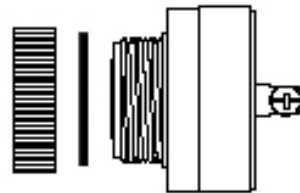
SC Panel Series



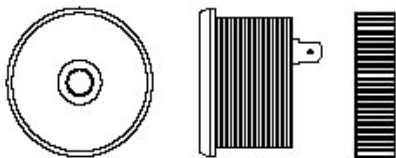
SCE & SCL Panel Series



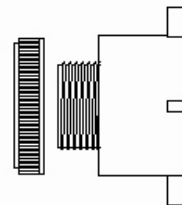
SNP Panel Series



SCH Panel Series



Tamper-Proof Panel Series



22mm Panel Series