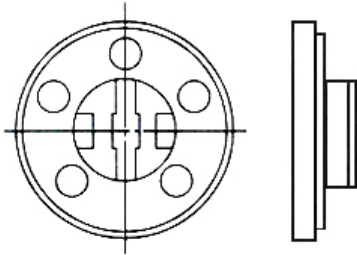


# Product APPLICATION Guide

## NEW Miniature Speaker Series

Suitable for Consumer, Industrial, Medical & Transportation Applications



### KEY FEATURES:

- Mylar Cone (Water & Fluid Resistant)
- Plastic & Metal Frames Available
- 8 Ohm; 0.25 Watts; RoHS Compliant
- Compact Size; Wide Frequency Response
- Other Diameters Available Upon Request

| Speaker Part Number | Impedance (Ohms) | Rated Power (Watts) | Max Power (Watts) | Frequency Range (kHz) | Sound Level (1W 1M) | Frame Material | Size Dia x Hgt (mm) |
|---------------------|------------------|---------------------|-------------------|-----------------------|---------------------|----------------|---------------------|
| PSR-13N08A-JQ       | 8                | 0.25                | 0.30              | 1.8 to 7.0            | 75                  | Metal          | 13 x 5.0            |
| PSR-18N08A-JQ       | 8                | 0.25                | 0.30              | 1.8 to 4.0            | 84                  | Metal          | 18 x 3.0            |
| PSR-20N08A-JQ       | 8                | 0.25                | 0.30              | 0.9 to 5.0            | 80                  | Metal          | 20 x 3.0            |
| PSR-28N08A-JQ       | 8                | 0.25                | 0.50              | 0.7 to 8.0            | 89                  | Metal          | 28 x 4.3            |
| PSR-36N08A-JQ       | 8                | 0.25                | 0.50              | 0.55 to 7.0           | 89                  | Metal          | 36 x 4.8            |
| PSR-40N08A-JQ       | 8                | 0.25                | 0.50              | 0.5 to 6.0            | 87                  | Metal          | 40 x 4.8            |
| PSR-40N08A05-JQ     | 8                | 0.25                | 0.50              | 0.5 to 5.0            | 89                  | Metal          | 40 x 5.0            |
| PSR-45N08A-JQ       | 8                | 0.25                | 0.30              | 0.4 to 6.0            | 88                  | Metal          | 45 x 4.8            |
| PSR-57N08A01-JQ     | 8                | 0.25                | 1.0               | 0.6 to 4.0            | 92                  | Metal          | 57 x 7.0            |
| PSR-11N08S-JQ**     | 8                | 0.25                | 0.30              | 1.6 to 9.0            | 75                  | Plastic        | 11 x 4.5            |
| PSR-20F08S-JQ       | 8                | 0.25                | 0.30              | 1.3 to 6.0            | 80                  | Plastic        | 20 x 5.0            |
| PSR-23N08S-JQ**     | 8                | 0.25                | 0.30              | 1.0 to 5.0            | 83                  | Plastic        | 23 x 3.7            |
| PSR-23F08S-JQ       | 8                | 0.25                | 0.30              | 0.9 to 6.5            | 81                  | Plastic        | 23 x 5.0            |
| PSR-27N08S01-JQ**   | 8                | 0.25                | 0.50              | 0.75 to 7.0           | 84                  | Plastic        | 27 x 5.0            |
| PSR-29F08S02-JQ     | 8                | 0.25                | 0.50              | 0.8 to 4.5            | 84                  | Plastic        | 29 x 9.0            |
| PSR-40F08S02-JQ     | 8                | 0.25                | 0.50              | 0.8 to 5.0            | 86                  | Plastic        | 40 x 7.5            |
| PSR-50F08S-JQ       | 8                | 0.25                | 0.50              | 0.5 to 5.0            | 91                  | Plastic        | 50 x 10.5           |
| PSR-57F08S02-JQ     | 8                | 0.25                | 0.50              | 0.35 to 5.0           | 90                  | Plastic        | 57 x 12.5           |

\*\* Magnet Inside of Plastic Frame

Call 317-612-1000 or Visit [www.mallory-sonalert.com](http://www.mallory-sonalert.com) for More Details